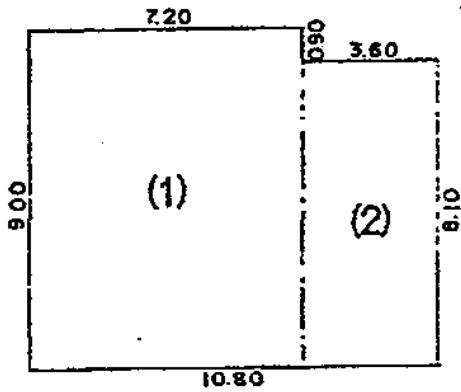






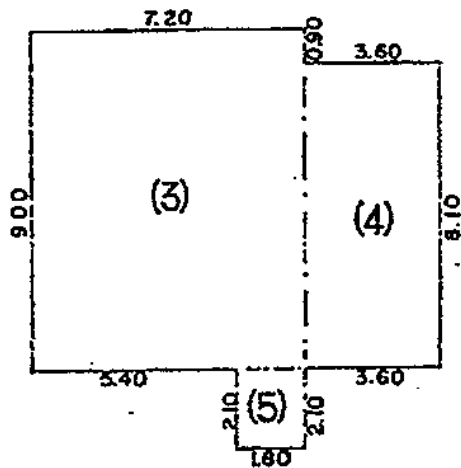
【各階平面図】

1 階



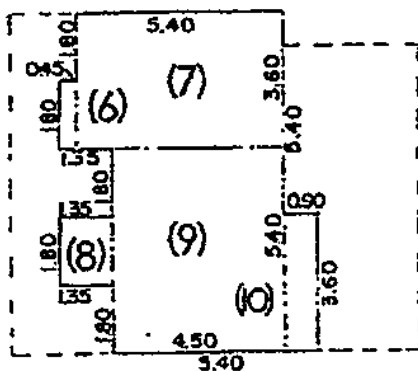
$$\begin{aligned} (1) & 9.00 \times 7.20 = 64.8000 \\ (2) & 8.10 \times 3.60 = 29.1600 \\ & 93.9600 \\ \text{床面積} & 93\text{m}^2\text{96} \end{aligned}$$

2 階



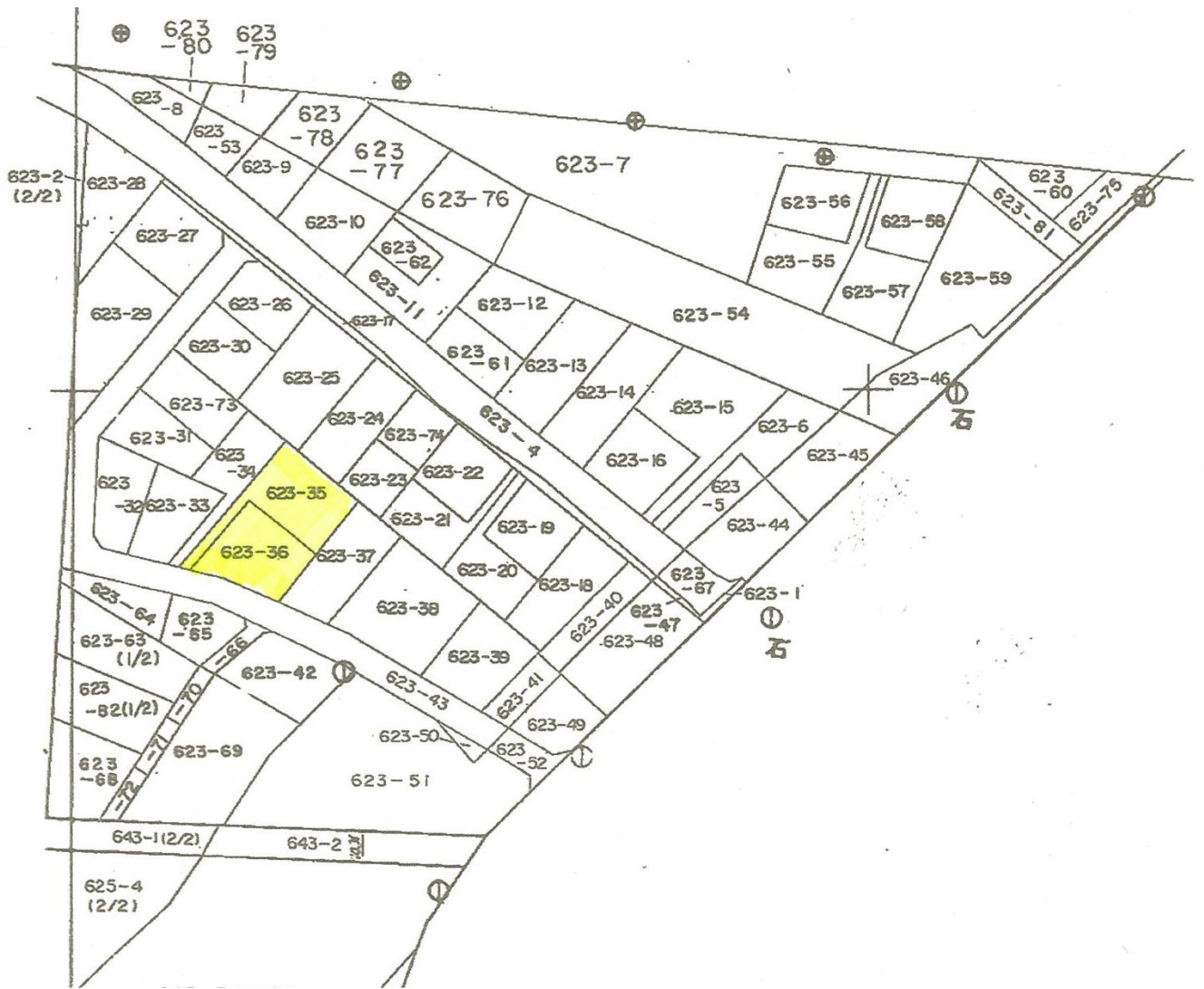
$$\begin{aligned} (3) & 9.00 \times 7.20 = 64.8000 \\ (4) & 8.10 \times 3.60 = 29.1600 \\ (5) & 2.10 \times 1.80 = 3.7800 \\ & 97.7400 \\ \text{床面積} & 97\text{m}^2\text{74} \end{aligned}$$

3 階



$$\begin{aligned} (6) & 1.80 \times 0.45 = 0.8100 \\ (7) & 5.40 \times 3.60 = 19.4400 \\ (8) & 1.80 \times 1.35 = 2.4300 \\ (9) & 5.40 \times 4.50 = 24.3000 \\ (10) & 3.60 \times 0.90 = 3.2400 \\ & 50.2200 \\ \text{床面積} & 50\text{m}^2\text{22} \end{aligned}$$

【地籍図】



提供先 羅臼町企画振興課 移住・定住担当  
〒086-1892 北海道目梨郡羅臼町栄町100番地83  
直通) 0153-87-2114